

DN 23-37

DREDGING NOTICE  
U.S. ARMY CORPS OF ENGINEERS  
ST. PAUL DISTRICT

NOTICE DATE: August 25 <sup>th</sup> , 2023	DREDGING CATEGORY: Imminent
MEETING DATE: If requested	MEETING TIME:
BOAT REQUIREMENT:	MEETING LOCATION:
DREDGE CUT NAME: Head of Raft Channel	RIVER MILE: 687.5 – 688.2

---

HISTORIC DATA

Frequency: 53%	Avg. Quantity/Job: 35,298 yd <sup>3</sup>
Last Date Dredged: June 23 <sup>rd</sup> , 2021	Avg. Quantity/Year: 18,558 yd <sup>3</sup>

SURVEY DATA

Date Surveyed: August 23<sup>rd</sup>, 2023  
Water Surface Elevation: 630.0  
Low Control Pool Elevation: 629.7  
Net Difference: +0.3'  
5 Day River Forecast: Holding Steady

DREDGING DATA

Recommended Channel Width: 400 feet  
Recommended Dredging Depth: 12 feet  
Estimated Quantity: 50,035 yd<sup>3</sup>  
Type of Dredge: Government Hydraulic Dredge Goetz  
Dredging Start Date: August 26<sup>th</sup>, 2023  
Estimated Duration: 7 dredging days  
Justification for Dredging: The navigation channel is reduced to 290' between the 9.0' contours and 95' between the 10.5' contours, on a bend with a recommended width of 400 feet.

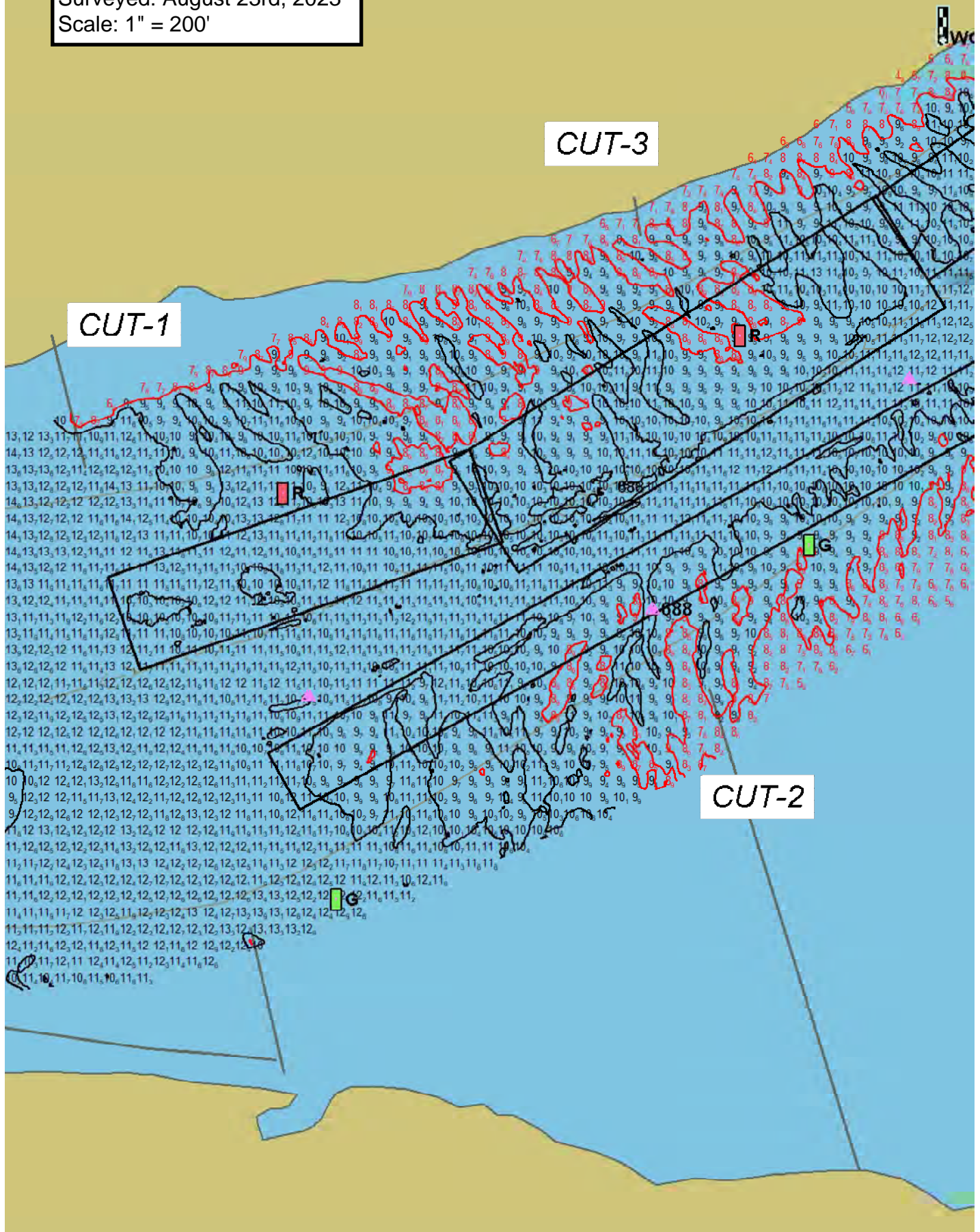
MATERIAL PLACEMENT DATA

Proposed Placement Site: Brownsville Containment  
Location: 8-688.7-RMP  
Site Characteristics: This is a historically used beneficial use stockpile site. We expect all material to be removed.

If you have any questions concerning this project, or if you would like to request an onsite meeting, please call me at (651) 290-5155.

Dan Cottrell  
Dredging Manager

Pool 8, Head of Raft Channel  
River Mile: 687.5 - 688.2  
Surveyed: August 23rd, 2023  
Scale: 1" = 200'

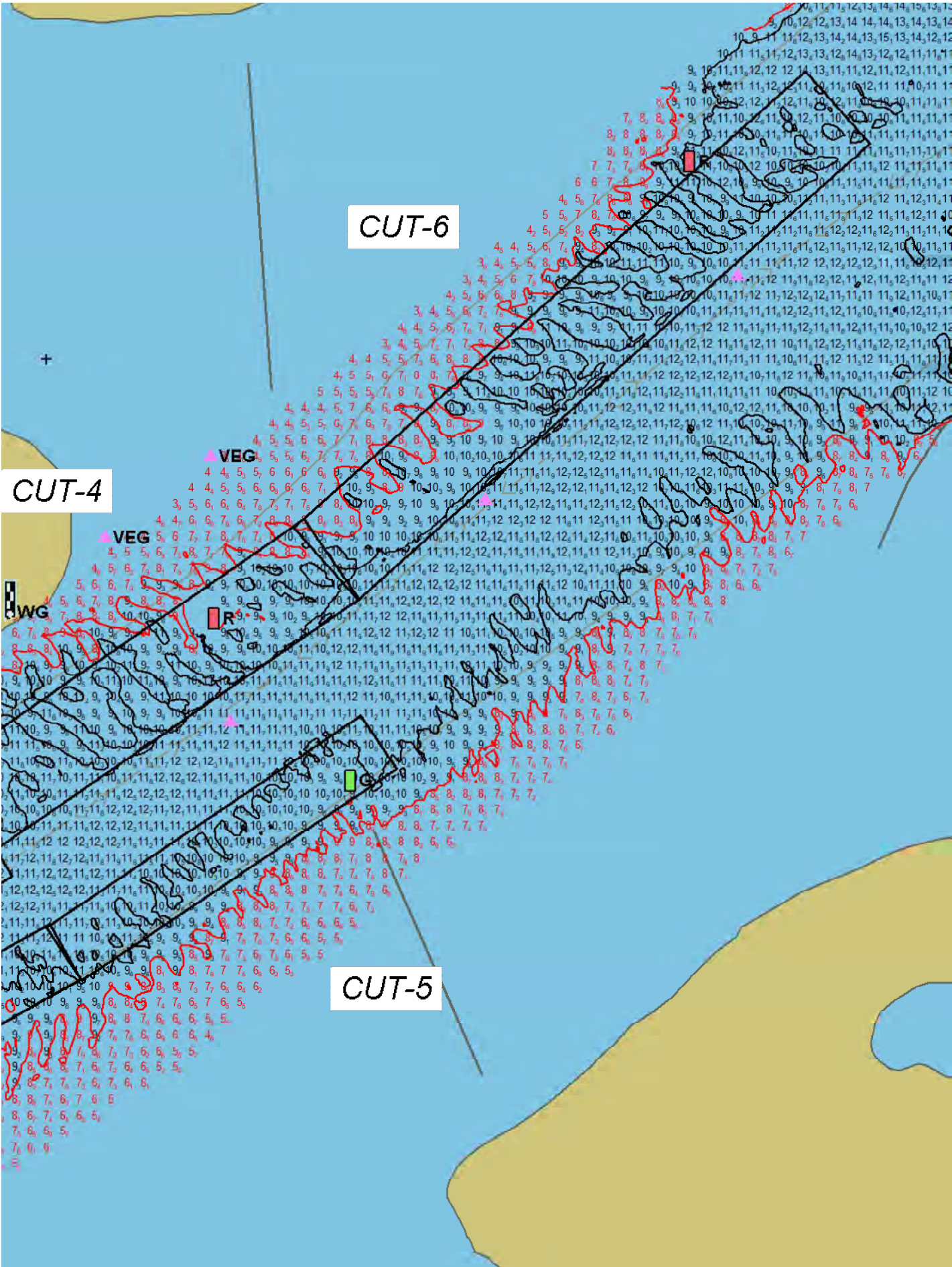


CUT-3

CUT-1

CUT-2

688



CUT-6

CUT-4

CUT-5

▲ VEG

▲ VEG

RWG

■ R

■ R

■ R

■ R

■ R

+

5

6

7

8

9

10

11

12

13

14

15

16

17

18

19

20

21

22

23

24

25

26

27

28

29

30

31

32

33

34

35

36

37

38

39

40

41

42

43

44

45

46

47

48

49

50

51

52

53

54

55

56

57

58

59

60

61

62

63

64

65

66

67

68

69

70

71

72

73

74

75

76

77

78

79

80

81

82

83

84

85

86

87

88

89

90

91

92

93

94

95

96

97

98

99

100

101

102

103

104

105

106

107

108

109

110

111

112

113

114

115

116

117

118

119

120

121

122

123

124

125

126

127

128

129

130

131

132

133

134

135

136

137

138

139

140

141

142

143

144

145

146

147

148

149

150

151

152

153

154

155

156

157

158

159

160

161

162

163

164

165

166

167

168

169

170

171

172

173

174

175

176

177

178

179

180

181

182

183

184

185

186

187

188

189

190

191

192

193

194

195

196

197

198

199

200

201

202

203

204

205

206

207

208

209

210

211

212

213

214

215

216

217

218

219

220

221

222

223

224

225

226

227

228

229

230

231

232

233

234

235

236

237

238

239

240

241

242

243

244

245

246

247

248

249

250

251

252

253

254

255

256

257

258

259

260

261

262

263

264

265

266

267

268

269

270

271

272

273

274

275

276

277

278

279

280

281

282

283

284

285

286

287

288

289

290

291

292

293

294

295

296

297

298

299

300

301

302

303

304

305

306

307

308

309

310

311

312

313

314

315

316

317

318

319

320

321

322

323

324

325

326

327

328